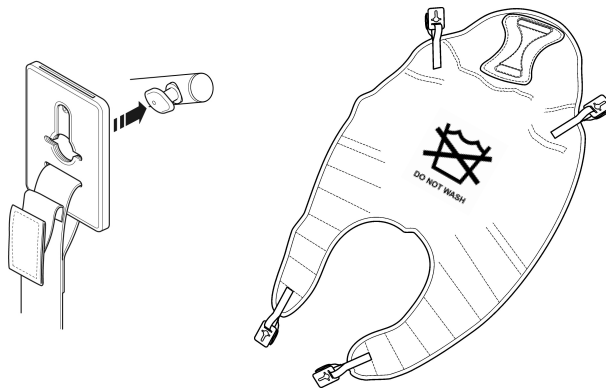


# Hoyer®

## COMFORT DISPOSABLE SLING INCLUDING SECURI3 CLIP SYSTEM

### USER GUIDE FOR THE COMFORT SLING

The Comfort Sling is an easy fit, contoured sling designed to accommodate 85-90% of clients. It is used in conjunction with the 4 point cradle which is designed to position patients from either a seated or reclined position.



**NOTE: DO NOT WASH DISPOSABLE SLINGS**



**HOYER RECOMMENDS THE USE OF GENUINE HOYER PARTS.**

*Hoyer slings and lifters are not designed to be interchangeable with other manufacturer's products. Using other manufacturer's products on Hoyer products is potentially unsafe and could result in serious injury to patient and/or caregiver.*

*For the safety of the patient and carer; before using a sling a full risk assessment must be conducted to ensure that the correct sling choice, method of positioning in the sling and procedure for transfer has been determined for the patient.*

*Check sling and stitching before each use. Using bleached, torn, cut, frayed or broken slings is unsafe and could result in serious injury or death to the patient.*

*Destroy and discard worn slings. Do not alter slings.*

*Never leave a patient unattended.*

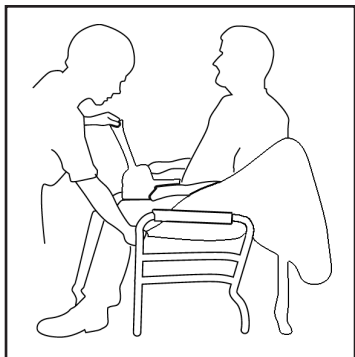


**ADDITIONAL SLINGS ARE AVAILABLE TO SUIT INDIVIDUAL NEEDS.  
YOU ARE ADVISED THAT YOU SHOULD ALWAYS SEEK THE ADVICE OF AN  
AUTHORISED DEALER BEFORE PURCHASING.**

**WE WILL BE PLEASED TO ADVISE YOU OF YOUR NEAREST AUTHORISED DEALER.**

 **Joerns**

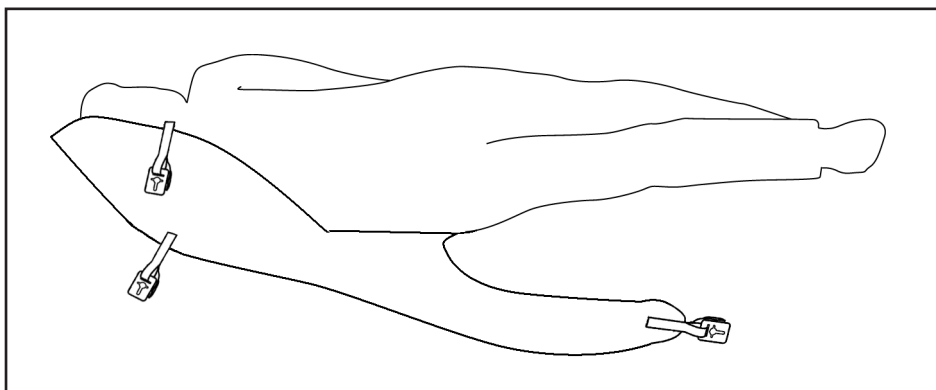
## HOW TO FIT FROM SEATED POSITION



The Comfort sling is fitted to the patient in the traditional way. Fitting from the seated position requires the carer to raise the clients leg and feed the leg support piece under and up between the legs. Repeat this procedure for other leg. Ensure the sling is not twisted or creased under the thigh. Bring both leg pieces together and feed through the modesty strap.

Position the rear section of the sling up and around the shoulders and head, the client is then ready for lifting.

## HOW TO FIT SLING FROM LYING POSITION

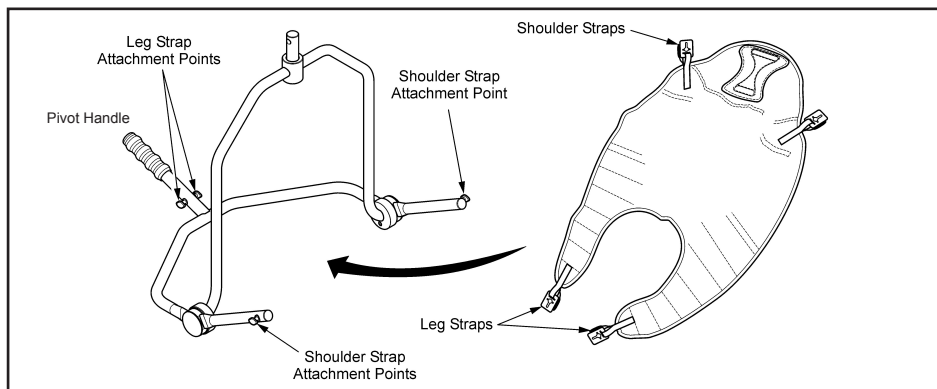


Draw sheet roll the client onto the sling, ensuring that the top of the commode aperture is at the base of the spine. Position the spreader bar as shown opposite and the client is ready for lifting.

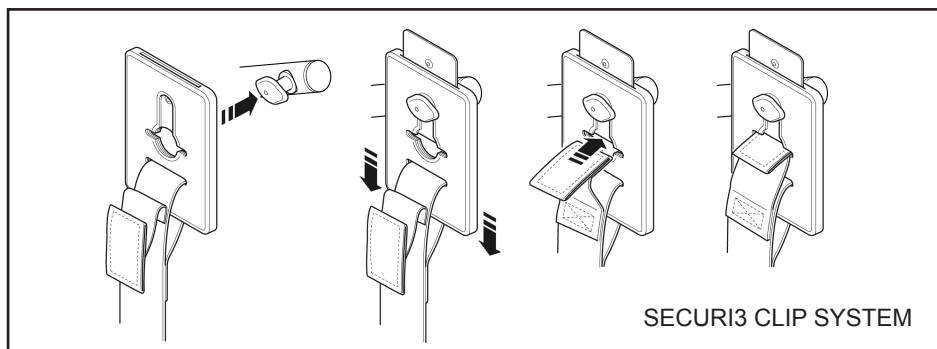
### **GOLDEN TIPS**

- 1. THE CLIENT'S POSTURE CAN BE ALTERED BY PUSHING DOWN ON THE 4 POINT CRADLE PIVOT HANDLE (SEE OPPOSITE).**
- 2. ATTACH SECURI3 CLIPS TO THE CRADLE AS DESCRIBED OPPOSITE.**
- 3. ENSURE ALL GREEN SAFETY LOOPS ARE VISIBLE BEFORE LIFTING.**

## HOW TO FIT THE SLING TO THE 4 POINT CRADLE



When fitted to the patient, the sling is connected to the 4 point cradle by using the Securi3 clip system (step by step guide as follows). To remove, simply reverse this procedure.

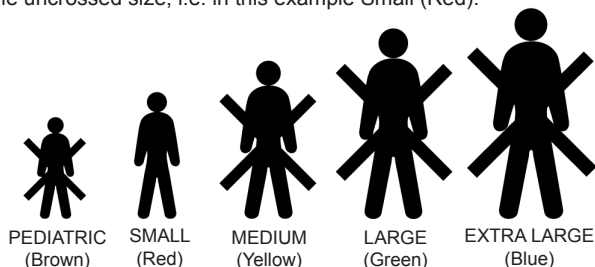


## COMFORT DISPOSABLE SLING TECHNICAL SPECIFICATIONS

STANDARD	BS EN ISO 10535
SAFE WORKING LOAD	500lbs / 227kg

### SIZING

Each sling is marked with the following colour coded symbols, four of which will be crossed. Your sling is the uncrossed size, i.e. in this example Small (Red).



### WASHING INSTRUCTIONS

#### DO NOT WASH

Disposable slings are patient specific and are designed not to be washed. Washing will compromise the integrity of the sling and therefore make it unsafe for use.



		Comfort Padded Disposable
ORDER CODE	PAEDIATRIC (BROWN)	NA25610 (Polyester)
	SMALL (RED)	NA25611 (Polyester)
	MEDIUM (YELLOW)	NA25612 (Polyester)
	LARGE (GREEN)	NA25613 (Polyester)
	EXTRA LARGE (BLUE)	NA25614 (Polyester)

DO NOT EXCEED THE RATED CAPACITY OF THE SLING OR THE LIFT.



Joerns Healthcare  
2100 Design Road, Suite 100  
Arlington, TX 76014  
Tel: 800-826-0270  
Fax: 800-457-8827  
[www.joerns.com](http://www.joerns.com)